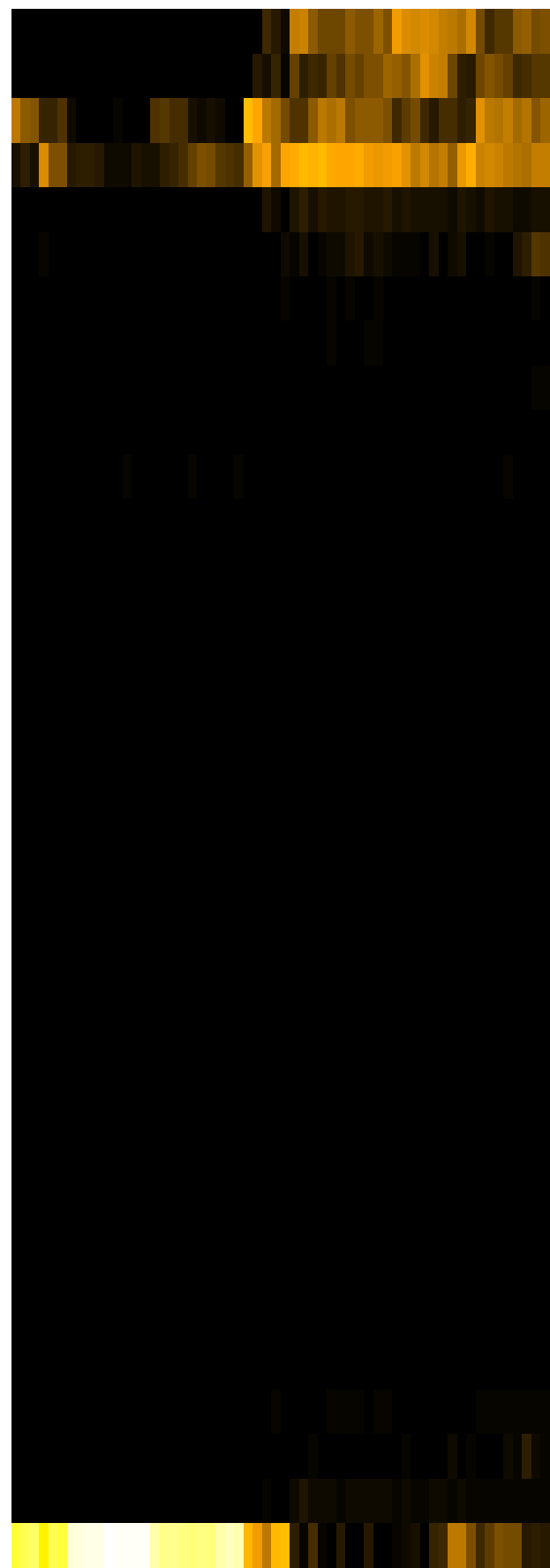
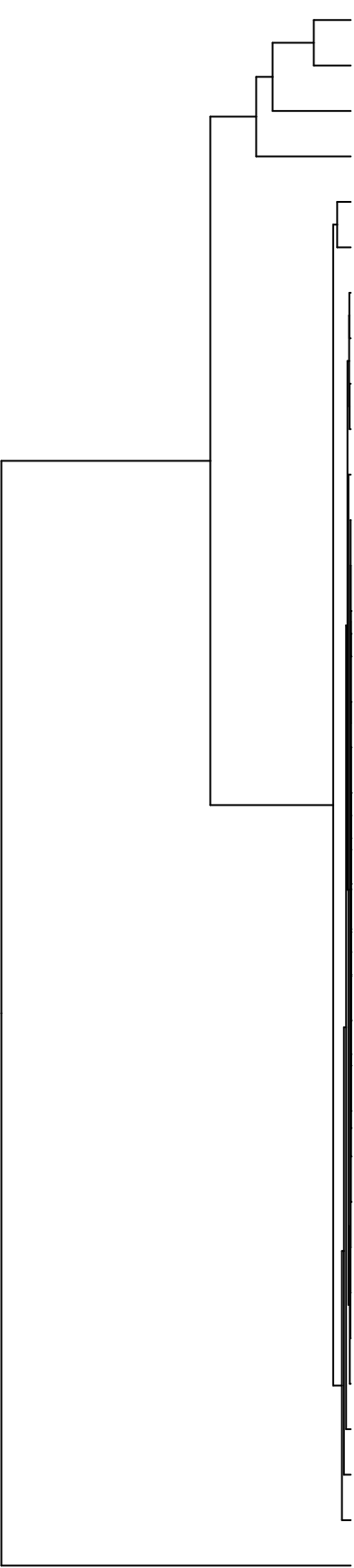


Group006
 I Final -PMA
 B Final -PMA



Veillonellaceae
 Pasteurellaceae
 Neisseriaceae
 Streptococcaceae
 Carnobacteriaceae
 Fusobacteriaceae
 Campylobacteraceae
 Porphyromonadaceae
 Leptotrichiaceae
 Prevotellaceae
 Staphylococcaceae
 Saccharibacteria_(TM7)_[F-1]
 Atopobiaceae
 Propionibacteriaceae
 Pseudomonadaceae
 Phyllobacteriaceae
 Rhizobiaceae
 Sphingomonadaceae
 Yersiniaceae
 Microbacteriaceae
 Weeksellaceae
 Hymenobacteraceae
 Saccharibacteria_(TM7)_[F-2]
 Mycobacteriaceae
 Flavobacteriaceae
 Absconditabacteria_(SR1)_[F-1]
 Moraxellaceae
 Burkholderiaceae
 Erysipelotrichaceae
 Comamonadaceae
 Lachnospiraceae
 Gemellaceae
 Micrococcaceae
 Actinomycetaceae
 Enterobacteriaceae

F28914.S461
 F28914.S563
 F28914.S608
 F28914.S464
 F28914.S404
 F28914.S401
 F28914.S405
 F28914.S459
 F28914.S462
 F28914.S458
 F28914.S562
 F28914.S565
 F28914.S407
 F28914.S567
 F28914.S247
 F28914.S303
 F28914.S087
 F28914.S144
 F28914.S088
 F28914.S084
 F28914.S246
 F28914.S245
 F28914.S242
 F28914.S302
 F28914.S142
 F28914.S085
 F28914.S139
 F28914.S140

Family

Samples